



Language Course

---

# PORTUGUÊS FROM ZERO

Your Mobility Partner

**PIC Number: 948037649 Organisation ID: E10207576**



## Course Overview

This course is designed for individuals who have little or no prior knowledge of the Portuguese language. Through a combination of interactive lectures, group discussions, and practical exercises, the participants will develop the fundamental skills needed to communicate effectively in Portuguese.

---

## Course Objectives

- Introduce the basics of Portuguese pronunciation and grammar.
- Teach how to read and write in Portuguese.
- Develop vocabulary and language comprehension skills.
- Provide the tools to hold basic conversations in Portuguese.
- Familiarize with Portuguese culture and customs.

## Learning Outcomes

This course, tailored for individuals with little to no prior knowledge of the Portuguese language, is designed to provide fundamental communication skills. By course completion, participants will develop a foundational Portuguese vocabulary and the ability to read, write, and understand basic Portuguese. They will engage in introductory conversations, enhancing their speaking and listening skills. Pronunciation will be improved for clear and effective communication. Additionally, participants will gain insight into Portuguese grammar and cultural nuances, preparing them for confident language use in everyday situations.

---

**Price:** All expenses can be covered through a Knowledge Acquisition (KA) subsidy within the Erasmus+ initiative. This is a 5-day training course in which Mobility Friends imposes a fee of **450 euros per attendee**, in courses located in the cities of the continent. For the Madeira and Azores, the price will be **480 euros**.

**Duration:** 1 Week (5-Day)

**Language:** English

**Schedule:** The time of classes, whether in the morning or afternoon is determined by the provider. The schedule may vary considerably based on participants' preferences and the trainer's discretion regarding any modifications.

**Certificate:** A Certificate of Attendance will be awarded to participants who attend minimum of 80% of the course.

**Cultural Activities:** The participants will have the opportunity to visit the most emblematic cities of Portugal (Porto, Braga, Guimarães, Aveiro, Viana do Castelo, and others). The cultural activity program may differ according to the participant's choices (the cultural visit is not included in the course price).

# PLANNER

## DAY 1

- Introduction to Portuguese language and culture.
- Portuguese phonetics and pronunciation.
- Basic Portuguese grammar rules and sentence structure.
- Common Portuguese expressions and greetings.

## DAY 2

- Portuguese Grammar and Vocabulary Building.
- Articles, nouns, and pronouns.
- Verb conjugation in present tense.
- Adjectives, adverbs, and prepositions.
- Numbers, time, and dates.
- Common vocabulary for daily conversations.

## DAY 3

- Communication across cultures and how to overcome cultural barriers.
- How to prepare and deliver effective speeches or presentations.
- Effective communication in group settings, including teamwork, leadership, and decision-making.

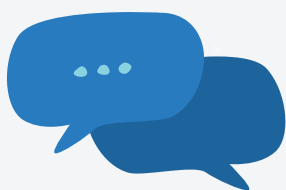
## DAY 4

- Portuguese Listening and Speaking Practice.
- Listening exercises to improve comprehension skills.
- Role-playing and group conversations to practice speaking.
- Basic Portuguese writing exercises.

## DAY 5

- Portuguese Culture and Customs.
- Introduction to Portuguese Culture and History.
- Basic social etiquette in Portugal and Portuguese-speaking countries.
- Traditional Portuguese food and drink.
- Portuguese music, art, and literature.
- Feedback and evaluation course.

\*Please note that program content may be subject to change based on input from our trainers.



# Talk with Us

# We are waiting for You

[www.mobilityfriends.org](http://www.mobilityfriends.org)

[Apply Now](#)



 [trainingcourses@mobilityfriends.org](mailto:trainingcourses@mobilityfriends.org)

 +351 253 144 226

 [MobilityFriends](#)

 [MobilityFriendsOfficial](#)

 [Mobility\\_Friends](#)

